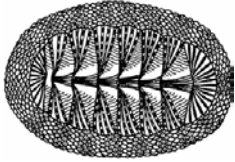
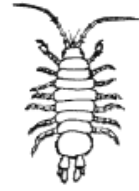


Kelp Forest Invertebrates



- **Invertebrate**: An animal **without** a backbone



Scientists classify creatures (including invertebrates!) into **phyla**. Phyla are groups of organisms with the same body structure. Make observations of the creatures in each phylum. In complete sentences, answer the following questions for each type of creature. Pick at least one creature. Draw and label its parts in the box.

1. How many legs does it have? Does it crawl or swim?
2. Does it have a shell? How might it protect itself?
3. Where might it live? In the dirt, on seaweed or rocks, or somewhere else?

Phylum: **Arthropoda**

<p>Arthropods have:</p> <ul style="list-style-type: none"> • Flexible shells made of chitin • Body parts with joints • Bodies with different segments 	<p>Picture</p>
<p>Our arthropods:</p> <p>Crabs, Isopods, and Amphipods</p>	<p>Organism: _____</p>

Observations:

Phylum: **Annelida**

<p>Annelids have:</p> <ul style="list-style-type: none">• Bodies with segments• No shell	<p>Picture</p> <p>Organism: _____</p>
<p>Our annelids:</p> <p>Marine worms</p>	

Observations:

Phylum: **Mollusca**

<p>Mollusks have:</p> <ul style="list-style-type: none">• A chalky, hard shell (usually)• A single foot	<p>Picture</p> <p>Organism: _____</p>
<p>Our mollusks:</p> <p>Snails and chitons</p>	

Observations:
